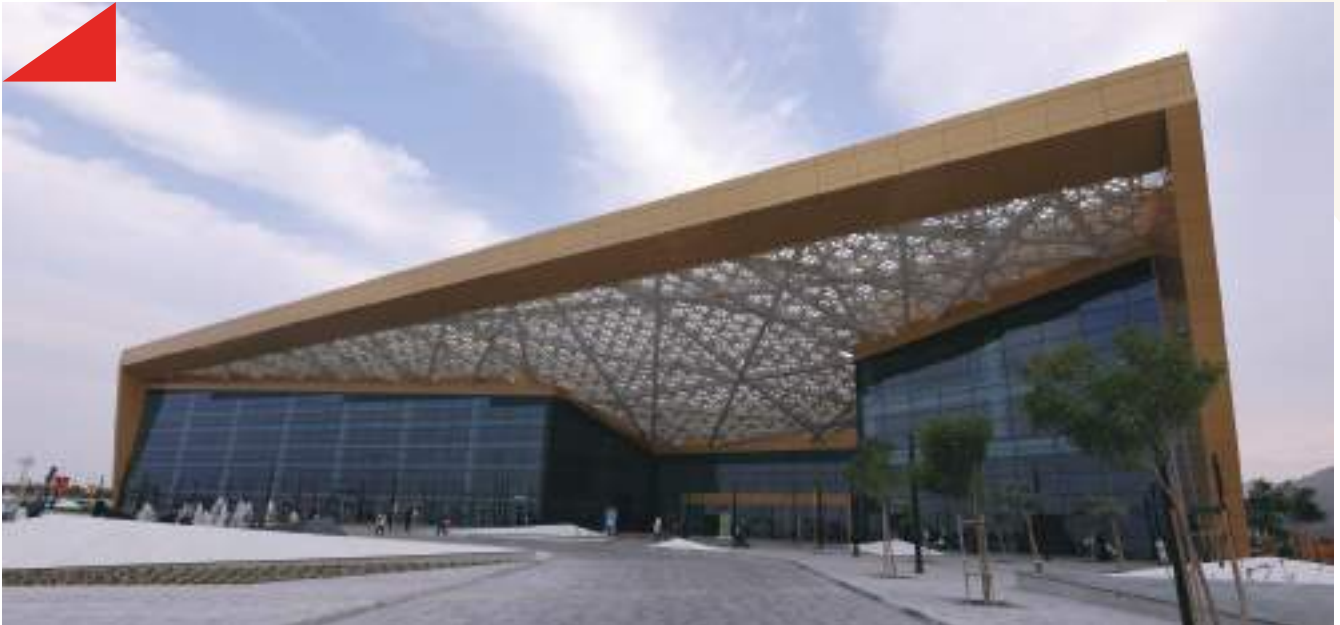


# Sustainability Highlights

---

# About Exhibition World Bahrain



**Opened in November 2022, Exhibition World Bahrain is the Middle East's newest and largest exhibition and convention centre. The venue features rich Arabic art and culture within its design. An innovative, flexible and adaptable space that caters to all types of events from large conventions and exhibitions to meetings, entertainment, concerts, gala events and celebrations.**

Exhibition World Bahrain is a project that compliments the Kingdom of Bahrain's great appeal as a destination and capitalises on its potential to become a regional hub for the Meetings, Incentives, Conventions and Exhibitions (MICE) industry. The centre is strategically placed within Bahrain's dynamic Sakhir area, the country's up-and-coming hub for events, sports and entertainment. The modern Arabesque structure is adjacent to multiple entertainment and sports venues, with easy access to a wide range of attractions and dining experiences.

Exhibition World Bahrain is owned by the Bahrain Tourism and Exhibitions Authority (BTEA), and it's operated by BTEA's strategic partner ASM Global, the world's leading venue management company with over 350 venues under its portfolio worldwide.

---

# General Manager's Message



On behalf of Exhibition World Bahrain, I am pleased to provide the sustainability highlights report for the year 2023. The aim of this report is to provide an overview of sustainability initiatives and how the company is planning to implement and maximise its corporate social responsibility strategy, focused on three guiding pillars: Giving back to the community, investing in people, and protecting the environment. We are committed to focusing on sustainability to leave a positive impact on our planet and local community.

As part of ASM Global's corporate social responsibility platform, ASM Global Acts, we acknowledge our responsibility to reduce our energy and water consumption, minimise our carbon footprint, and eliminate single-use plastic. Our ambitious targets fall in line with the Kingdom of Bahrain's Economic Vision 2030, which focuses on Bahrain's efforts in achieving sustainable and innovative goals by the year 2030. Our vision is to lead an environmental change and amplify our social impact by investing in partnerships and working as a team, to leave a positive mark on the Kingdom of Bahrain.

We can't maintain our Earth's ecosystems or continue to function as we do if more sustainable choices are not made. We offer a unique memorable experience that goes far and beyond to our clients, delegates, and visitors, by offering them innovative, flexible, and sustainable solutions at our stunning state of the art venue. I am optimistic about our future, as we continue at Exhibition World Bahrain to work on pioneering ideas that provide better outcomes for our community, our visitors and the environment.

A handwritten signature in black ink, appearing to read 'Dr. Debbie Kristiansen', written in a cursive style.

**Dr. Debbie Kristiansen**

General Manager  
Exhibition World Bahrain





**Exhibition World Bahrain is working towards becoming a sustainable company, with every department playing a crucial role in the day-to-day operations to achieve this objective, by working closely with the organisers, employees, our partners and guests to implement sustainability in every aspect of our organisation.**

---

# Exhibition World Bahrain's Current Area of Focus



**Exhibition World Bahrain has introduced many sustainable initiatives within the venue, highlighted below:**

## **Environmentally Friendly Construction Materials**

Using environmentally friendly materials during construction, such as **insulated sandwich panels** instead of concrete, while constructing the exhibition halls. These panels ensure active hydro-insulation against natural conditions (rain, humidity). In addition to the above, **thermal insulated materials** have been used during the construction phase, reducing air conditioning, which helps with the preservation of the building and prevents humidity, mold or any deformation from occurring. An important method of facilitating sustainability during construction is by the use of **Building Management Systems (BMS)** to control running A/C chillers, these chillers will be adjusted to spaces that are used and utilised.

## **Energy Efficient Lighting**

**LED lights** have been installed within the venue, one of the most energy-efficient and environmentally friendly lighting technologies. Similarly, to reduce artificial lighting, the venue is designed to draw in **natural lighting** (around 1,800 m<sup>2</sup>) through the use of skylights and side glass walls. **Motion sensor lights** have also been installed in multiple locations within the venue, reducing electricity consumption.

## **Water & Plant**

At EWB, the **air conditioning condensation water** is reused to **irrigate the outdoor plant**, reducing the use of grid water. Furthermore, the **indoor plants** that have been chosen requires low maintenance and less water. In addition, the exhibition centre includes an indoor **vertical garden** (living walls), contributing to purifying the air and cooler temperatures, as well as adding a unique feature to the state of the art venue.

**Soap and water dispensers** have been installed in all toilets, to avoid the use of plastic containers. In addition, all offices employ **water coolers**, encouraging the use of reusable water bottles and reducing single-use plastics.

## **Waste Management**

**Recycling bins** are placed throughout the Centre, which is in line with our **waste management** initiative to collect all general waste from multiple locations within the venue and offices, then segregating it into the various streams, recycling most of the items to reduce landfill waste.





**We offer a unique memorable experience that goes far and beyond to our clients, delegates, and visitors, by offering them innovative, flexible, and sustainable solutions at our stunning state of the art venue.**



---

# The Future Plan



**The team at Exhibition World Bahrain are working on a more sustainable approach moving forward, with plans to incorporate sustainability in our daily operations.**

## **Sustainable projects in the pipeline:**

### **Solar Panels**

As part of our sustainability plans within the venue, solar panels will be installed as a source of renewable power.

### **Digital Mediums**

Converting print banners installed in the venue to LED screens and opting to use QR codes instead of badges, this allows us to be eco-friendly.

### **Eco-friendly Cleaning Products**

Identifying greener cleaning products - Stewarding (using ecofriendly fluids), to replace non-sustainable chemistries. Focusing on selecting non-hazardous cleaning products. Eco-friendly fluids are compliant with environmental regulations and are safer for the environment.



---

# The Future Plan (continued)

The Culinary department will be the official catering provider for all events at Exhibition World Bahrain, committed to delivering exceptional experiences in the F&B market, with a focus on sustainable practices, local-based experiences and world-class hospitality.

The team are currently preparing to launch the new EWB Culinary experience, with several unique initiatives in the pipeline, highlighted below:

### Farm-to-table experience

Providing customers with unique farm-to-table experiences by using local produce from organic farms at the Kingdom of Bahrain.

### Eco-friendly dining

**Reusable China and silverware** will be provided to customers, similarly **straw less lids** will also be offered. In addition, menu items will be customised with options for **local and organic products**, catering to all types of customers. **Disposable cutlery** will be selected with **biodegradable materials** and recyclability in mind. The team will also ensure **sustainable decorations** and signage options are available to amplify food and beverage messaging.



### On Site Water Bottling

Our focus is to have access to **filtered and purified water** on site, avoiding the use of plastic bottles that have been exposed to sunlight, dust and pollution during delivery. This eliminates the need to store large bottles of water, leaving storage space available for other uses. Eco-friendly drinking water is not only safer for the environment, but it also reduces the number of plastic bottles going to landfill, lowers dependence on oil-derived plastics, and zero emissions are caused since no bottles will be transported. Unique **hydration station** options will also be available.

### Waste Management

Waste Management initiative will also be implemented in the main kitchen and will be sorted into various streams.

### Oil Grease Recycling

Filtering fryer oil to maximise usage and streamlines the changeover of spent oil with new oil, this process includes different types of machines that help with filtration, collection and transportation of grease between kitchens and the loading dock.



---

## The Future Plan (continued)



### Food Donations

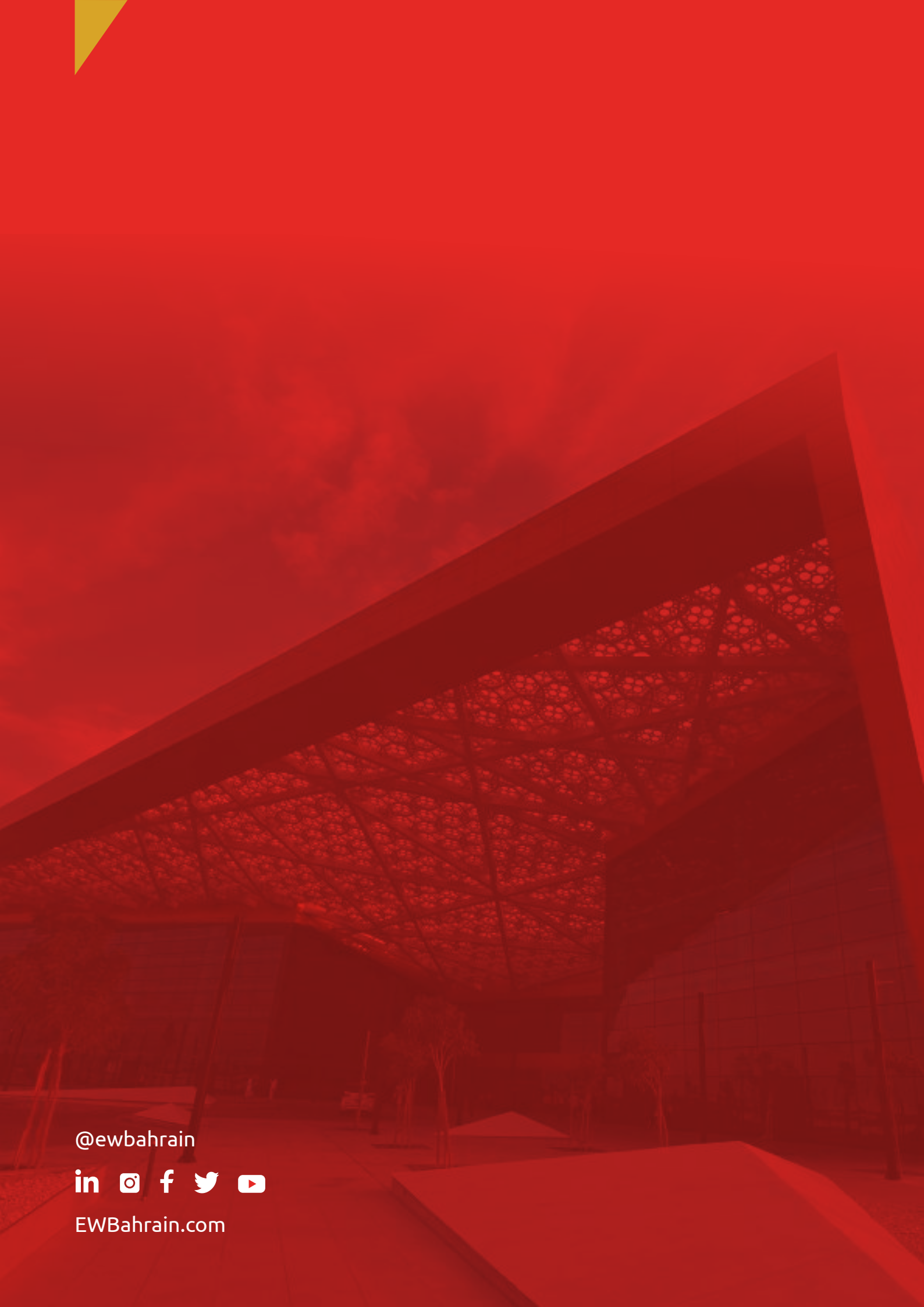
All perishable produce, overproduced food and excess food will be donated to **local community partners**. These organisations will help facilitate the distribution of such foods to those in need. Furthermore, to minimise waste during food preparations, **total food utilisation** will be implemented where excess ingredients will be used as purees and baked goods.

### Smart Packaging

New innovative sustainable packaging will be used, carefully selecting materials and technologies to ensure the product maintains quality and freshness throughout the entire supply chain.

**The organisation will continuously plan and implement sustainable approaches to achieve targets set by the executive team.**





@ewbahrain

[in](#) [ig](#) [f](#) [t](#) [yt](#)

EWBahrain.com